

Controls & Features

Power
Press to turn GT-1 on or off

Magnet Mount Receptacle

MARK
When connected to ESCORT Live App, press the MARK button to report Live Police, Speed Camera, Red-Light Camera, or simply any locations for future references

Brightness (BRT)
Press to adjust display brightness (Dark, Min, Med, Max)

Sensitivity (SEN)
Press to adjust detector sensitivity (Highway, AutoScan, Auto NoX)

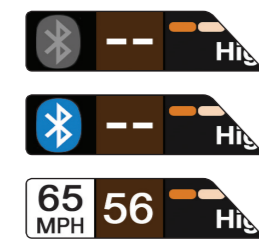
Volume
Press and hold + or - to adjust volume

Display Alert Area

Display

- Bluetooth icon appears in grey when not paired to phone and ESCORT Live App.
- When paired to phone a Bluetooth icon will appear on display screen in blue.
- When connected to Escort Live, the speed limit data and actual speed will display on screen.

Mute
Press to mute an alert. When connected to ESCORT Live App, press three times to lock out a false alert; press twice while receiving a locked-out alert to unlock



Important! Actual speed and live alerts will not be shown on your Beltronics GT-1 if your smart phone does not have good GPS reception.

Settings & Preferences

Press and hold the MUTE and SEN buttons to access Programming. To exit Programming, simply wait a few seconds without pressing a button. The unit will display **Completed** to confirm your selections.

Press MUTE to go from one category to the next	Press VOLUME + or - to change your setting within a category
User Mode	Advanced* Novice Access and customize all Settings and Preferences in Advanced Mode <i>NOTE: Switch back to Advance mode to view all Preferences</i>
Pilot	Scan Bar* Full Word Scanning Bar with Full Word Full Word: AutoScan, Auto NoX, or Highway
Display Color	Copper*/Blue/Green/Red Set color to match your vehicle's dash display
Meter Mode	Standard* Tech Threat Basic Single band with bar graph of signal strength Single band with numeric frequency Multiple bands with bar graph of signal strengths Simple messages replace bands: Caution (if traveling below cruise alert limit) Slow Down (if traveling above cruise alert limit)
Tones	Standard* Mild Standard Beltronics alert tones Mild doorbell chime alert tones
AutoMute	On* / Off Automatically reduces audio during alert
Language	English*/Espanol Language for voice and text
Voice	On* / Off Voice announcements
Band Enables	Default* Modified Default Settings for North America Customize the bands you want to monitor

Press SEN to go from one band category to the next

Press VOLUME + or - to change your setting within a category

X Band	On* / Off	
K Band	On* / Off	Freq: 24.050-24.250 GHz <i>NOTE: When K Band is off, you can select separate segments of the band to turn on or off.</i>
KN1	On* / Off	Freq: 24.050 - 24.110 GHz
KN2	On* / Off	Freq: 24.110 - 24.175 GHz
KN3	On* / Off	Freq: 24.175 - 24.250 GHz
KN4	On* / Off	Freq: 23.950 - 24.050 GHz
Ka Band	On* / Off	Freq: 33.400-36.000 GHz <i>NOTE: When Ka Band is off, you can select separate segments of the band to turn on and off.</i>
KaN1	On* / Off	Freq: 33.392 - 33.704 GHz
KaN2	On* / Off	Freq: 33.704 - 33.896 GHz
KaN3	On* / Off	Freq: 33.886 - 34.198 GHz
KaN4	On* / Off	Freq: 34.184 - 34.592 GHz
KaN5	On* / Off	Freq: 34.592 - 34.808 GHz
KaN6	On* / Off	Freq: 34.806 - 35.166 GHz
KaN7	On* / Off	Freq: 35.143 - 35.383 GHz
KaN8	On* / Off	Freq: 35.378 - 35.618 GHz
KaN9	On* / Off	Freq: 35.595 - 35.835 GHz
KaN10	On* / Off	Freq: 35.830 - 35.998 GHz
Laser	On* / Off	
TSR	On* / Off	Automatically rejects traffic flow sensors-monitoring false alarms

Additional Preference options within ESCORT Live App when connected to Beltronics GT-1

Cruise Alert	Off / 20-160 mph 20 mph*	Offers double beep alert tones below specified speed
Speed Display	On* Off	Displays current speed Displays battery voltage
Units	English*/Metric	Units for distance and speed

*Default Setting

Notes for Settings & Preferences
For descriptions of features and functions available when connected to ESCORT Live, visit Beltronics.com and download the Beltronics GT-1 Owner's Manual.

To restore Beltronics GT-1 to its original factory settings, press and hold MUTE and SEN while powering on detector. **Restored** message will display, acknowledging the reset.

Software Updates
Beltronics GT-1 is easily updated using our exclusive detector software tools found on our web site. Firmware, or the operating software for the detector, can be updated using these tools.

In order to have access to these updates, please register your Beltronics GT-1 at www.Beltronics.com. Once registered, you will receive email notifications that updates are now available for your firmware. To handle your software updates you need to connect your Beltronics GT-1 to a computer.

You can connect Beltronics GT-1 to a computer via Micro USB/USB A cable (not included).

ESCORT Live Compatible



The Bluetooth® word mark and logos are registered trademarks owned by Bluetooth SIG, Inc. and any use of such marks by ESCORT is under license.

Contact Us

866.468.0322 • Beltronics.com
Beltronics USA, Inc.
5442 West Chester Road, West Chester OH 45069

Beltronics One Year Limited Warranty
What this warranty covers: Beltronics USA, Inc. ("Beltronics") warrants your Product against all defects in materials and workmanship.
For how long: One (1) year from the date of original purchase from an authorized Beltronics dealer.
What we will do: If a breach of warranty occurs, Beltronics, at its discretion, will either repair or replace your Product free of charge.
What we will not do: Beltronics will not pay shipping charges that you incur for sending your Product to us.
What you must do to maintain this warranty: Show original proof of purchase or receipt from an authorized Beltronics dealer.
Warranty exclusions: This warranty does not apply to your product under any of the following conditions: 1. The serial number has been removed or modified. 2. Your product has been subjected to misuse or damage (including water damage, physical abuse, and/or improper installation). 3. Your product has been modified in any way. 4. Your receipt or proof-of-purchase is from a non-authorized dealer or internet auction site, including E-bay, U-bid, or other non-authorized resellers. 5. You are not the original purchaser of the Product from an authorized dealer or did not receive it as a gift from the original purchaser of the Product from an authorized dealer.
To obtain service: 1. Contact Beltronics (1-800-341-2288) to obtain a Return Authorization Number. 2. Properly pack your Product and include: your name, complete return address, written description of the problem with your Product, daytime telephone number, and a copy of the original proof of purchase or receipt. 3. Label the outside of the package clearly with your Return Authorization Number. Ship the Product pre-paid (insured, for your protection) to: Beltronics USA, Inc., 5442 West Chester Rd., West Chester, OH 45069.
LIMITATION OF WARRANTY: The obligations set forth above are Beltronics' sole obligations and your exclusive remedy. Beltronics makes no other express warranty. Any implied warranty of merchantability or fitness for a particular purpose that may be applicable to the Product is limited in duration to the duration of this warranty. Some States do not allow limitations on how long an implied warranty lasts, so the above limitation may not apply to you. BELTRONICS SHALL NOT BE LIABLE FOR CONSEQUENTIAL, SPECIAL OR INCIDENTAL DAMAGES INCLUDING, WITHOUT LIMITATION, DAMAGES ARISING OUT OF THE USE, MISUSE OR MOUNTING OF THE PRODUCT. Some States do not allow the exclusion or limitation of incidental or consequential damages, so the above limitation or exclusion may not apply to you. Beltronics is not responsible for products lost in shipment between the owner and our service center. Other legal rights: This warranty gives you specific legal rights, and you may also have other rights which vary from State to State.

©2018 Beltronics USA, Inc. Beltronics®, GT-1™, Escort Live™, Defender®, AFR®, TrueLock™, SmartShield™, SpecDisplay™, AutoSensitivity™ and ExpertMeter™ are trademarks of Beltronics USA, Inc. Manufactured in the Philippines. Features, specifications and prices subject to change without notice.
FCC NOTE: Modifications not expressly approved by the manufacturer could void the user's FCC granted authority to operate the equipment.
FCC ID: QL4G1SS
This device complies with part 15 of the FCC rules. Operation is subject to the following two conditions: (1) This device may not cause harmful interference, and (2) this device must accept any interference received including interference that may cause undesired operation.

Live life in the passing lane.

App Integration Provides Crowd-Sourced Alerts

BELTRONICS GT-1 Long range radar/laser detection.

Powerful Digital Signal Processor | Instantly clear voice alerts | Convenient magnetic mount system

(Note: Must be paired with ESCORT Live ticket protection App to receive posted speed limit data.)

Congratulations

Beltronics GT-1 Features



You've purchased the **all-new Beltronics GT-1** which is the one of the most advanced high-performance radar and laser detector on the market. The Beltronics GT-1 provides long-range warning on all radar and laser bands. Go to Beltronics.com for the full featured Beltronics GT-1 Owner's Manual. Guía de Referencia Rápida Española traducida y manual con todas las funciones también son disponibles a www.Beltronics.com

65 MPH 56 Ka Beltronics GT-1 features a new multi-color OLED display. Brilliant graphics illuminate intuitive icons that identify the type of threat at a glance.

65 MPH 56 567 FT

65 MPH 56 567 FT

Images shown above appear when GT-1 is connected to your phone and ESCORT Live App.

- The Beltronics GT-1 introduces the following state-of-the-art performance and features:
- Long-range K and Ka-band radar performance, including instant-on radar guns.
 - Highway, AutoScan, and Auto No X settings.
 - Exclusive Threat Mode tracks and displays up to 4 radar signals simultaneously.
 - Exclusive Tech Mode provides actual numeric frequency for any radar signal and alert bar.
 - The Beltronics GT-1 with built in Bluetooth® technology gives you access to ESCORT's award-winning App, ESCORT Live. Features when connected to ESCORT Live:
 - Our exclusive real-time ticket protection network, which warns you of upcoming alerts received by other users in the area.
 - Our DEFENDER Database, which warns you of verified speed traps, speed cameras, and red light cameras.
 - Our most popular GPS-powered features, including speed-limit data for over-speed alerts, live traffic data for your current location, and manual lock-out to help eliminate false alerts.



Live Ready!

Registration

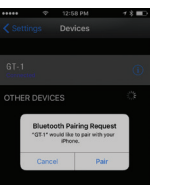
Follow these steps to register your Beltronics GT-1. You will need the detector's serial number to complete the registration.

- 1 Visit www.Beltronics.com and click Product Registration.
- 2 Click the "Registration for all devices" link.
- 3 Follow the onscreen instructions to register your device.

Be sure to write down the username and password you create, as you will need this information to access the ESCORT Live ticket protection App. (You will also receive an e-mail with this information, once you have registered your device.)

NOTE: GT-1 comes with 1-year free premium subscription to ESCORT Live™.

- For iPhone:**
- 1 Ensure Beltronics GT-1 power is ON.
 - 2 Open the App Store on your iPhone and search for **ESCORT Live Radar**.
 - 3 Follow the onscreen instructions to download **ESCORT Live Radar** and then open the App.
 - 4 When prompted, enter the username and password you created when registering your product at Beltronics.com.
 - 5 Press the Settings button then select **Devices**.
 - 6 You should see **GT-1** listed with Not Connected underneath. Press the **GT-1** device entry and when prompted select Pair.
 - 7 The Bluetooth icon on the **GT-1** display will appear to confirm that it is paired to your iPhone.



ESCORT Live

ESCORT Live continued

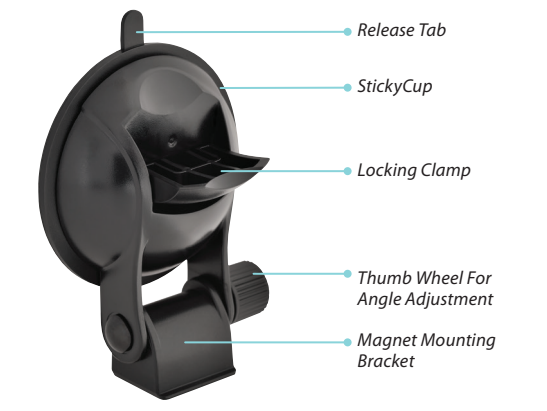
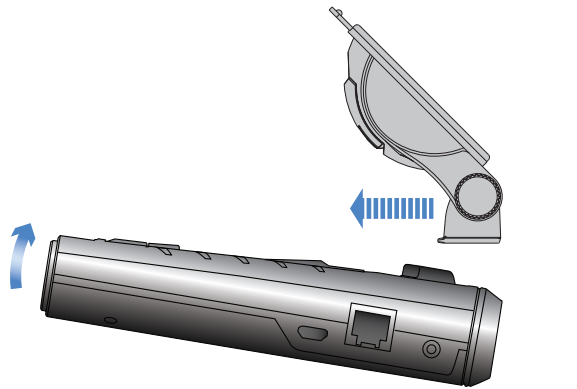
- For Android based smartphones:**
- 1 Ensure Beltronics GT-1 power is ON.
 - 2 On your smartphone go to Bluetooth® Settings and make sure that Bluetooth® is ON.
 - 3 Press Scan for devices and wait for the device list to populate, **GT-1** should appear under Available devices.
 - 4 Press the **GT-1** device entry.
 - 5 The Bluetooth icon on the Beltronics GT-1 display will appear to confirm that it is paired to your smartphone.
 - 6 Open Google Play on your smartphone and search for **Escort Live Radar**.
 - 7 Follow the onscreen instructions to download **Escort Live Radar** and then open the App.
 - 8 When prompted, enter the username and password you created when registering your product at Beltronics.com
 - 9 Open the App, walk through the tutorial, and you're ready to hit the road!



Installation

Beltronics GT-1 comes with a versatile EZ Mag Mount™.

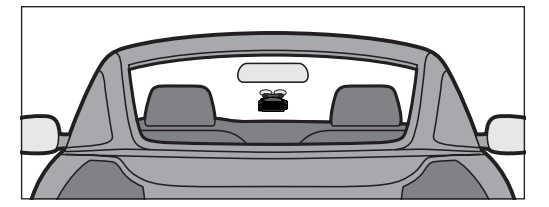
- To mount the detector in your vehicle:**
- 1 Remove backing from StickyCup mount.
 - 2 Firmly press StickyCup onto windshield and flip locking clamp to secure.
 - 3 Slide the detector onto the mounting bracket until it's fully engaged. The magnet inside holds the detector in place.



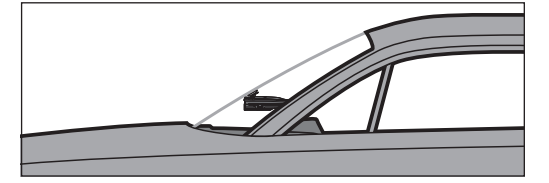
Installation

Beltronics GT-1 comes with a versatile EZ Mag Mount™.

- 4 To adjust view, loosen thumb wheel and adjust angle of mounting bracket. Tighten thumb wheel to secure.
- 5 To remove detector, simply pull the detector device off the mount bracket.
- 6 To remove mount from windshield, release locking clamp and pull tab on top of StickyCup.



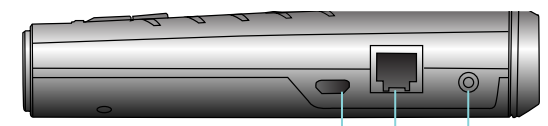
- StickyCup Care Instructions:**
To clean your StickyCup, simply rinse under warm water, gently wipe off any debris and allow to air dry.
- Mount Beltronics GT-1 away from windshield wipers, other solid objects, and heavily tinted areas that might obstruct the radar antenna or laser lens.



Controls & Features

- Using GT-1**
- 1 Plug small end of SmartCord into modular jack on GT-1 and large end of SmartCord into your car's lighter/accessory socket.
 - 2 GT-1 should power on automatically. If not, press the device's power button.

NOTE: You can easily access and customize all of your Settings and Preferences by pressing and holding the MUTE and SEN buttons. See Settings and Preferences for details.



- Earphone Jack**
Connects to optional 3.5 mm stereo earphone.
- Modular Jack**
Connects to SmartCord for powering your device
- Micro USB Jack**
Connects to your computer via Micro USB/USB A cable for downloading software updates

- Using SmartCord**
- Mute Button: Press to mute an alert.
 - Alert Light: Lights red when receiving an alert.
 - Power Light: Lights green when receiving power.



- Lighter Adapter**
Connects to lighter/accessory socket
- Modular Connector**
Plugs into detector jack