

## EZ-Programming



### How to use EZ-Programming

- To enter Program Mode, press and hold both PGM buttons for 2 seconds. *The unit will beep twice, and will display the word Program.*
- Then press either RVW button to review the current settings. You can either tap the button to change from item to item, or press and hold the button to scroll through the items.
- Press the CHG button to change any setting. You can either tap the button to change from setting to setting, or hold the button to scroll through all the options.
- To leave the Program Mode, simply wait 8 seconds without pressing any button. *The unit will display Complete, beep 4 times, and return to normal operation.*

To quickly reset SOLO S4 to the factory program settings, press and hold the Mute and SEN buttons while turning SOLO S4 on.

### Example of EZ-Programming

Here is how you would turn SOLO S4's AutoMute feature off.

- Enter the Program Mode by holding one of the VOL buttons and SEN button down for 2 seconds. *SOLO S4 will beep twice and display Program.*
- Then hold the RVW button down. *SOLO S4 will scroll through the categories, starting with Pilot options, Auto-Power, Power-On sequence, Signal Strength Meter, AutoMute, Tones, City sensitivity, Brightness, and Bands.*
- Release the RVW button when SOLO S4 shows the AutoMute item. *Since the factory setting is for AutoMute to be on, SOLO S4 will display aMuteON. (If you accidentally go to the next category, press the opposite "VOL" button to go back.)*
- Press the CHG button to change from aMuteON to aMuteOFF.
- To complete the Programming, simply wait 8 seconds without pressing any button. *SOLO S4 will display Complete, beep 4 times, and return to normal operation.*

## Settings & Preferences

Press the **RVW** button to go from one category to the next

Pilot Light  
(Options using  
12-volt SmartCord)

Auto Power

Power-On Sequence

Signal Strength Meter

AutoMute

AudioTones

City Mode Sensitivity

Brightness

Bands

Pilot HWY  
Pilot H  
Pilot H.>  
Pilot +  
Pilot +.>  
Pilot +>

aPwr Motn  
aPwr Time  
aPwr Off

PwrOn STD  
PwrOn FST

Meter STD  
Meter EXP

aMute ON  
aMute OFF

Tone STD  
Tone LOUD

City STD  
City LoX  
City NoX

Brt AUTO  
Brt MIN  
Brt MED  
Brt MAX  
Brt DARK

Bands DFT  
Bands MOD

X ON or OFF  
K ON or OFF  
Ka ON or OFF  
LSR ON or OFF  
SWS ON or OFF  
VG2 ON or OFF

Press the **CHG** button to change your setting within a category

\* Full word: Highway or Auto or City  
Letter: H or A or C  
Letter, with scanning dot  
Symbol: + or - or -  
Symbol, with scanning dot  
Scanning symbol

\* Uses motion to turn SOLO S4 off  
Uses time to turn SOLO S4 off  
Turn SOLO S4 on and off manually

\* Standard power-on sequence  
Fast power-on sequence

\* Standard signal strength meter  
Expert Meter

\* AutoMute on  
AutoMute off

\* Standard tones  
Loud tones

\* Standard City mode sensitivity  
Low X-band sensitivity in City Mode  
No X-band sensitivity in City Mode

\* Brightness is controlled automatically  
Minimum brightness when turned on  
Medium brightness when turned on  
Maximum brightness when turned on  
Full Dark Mode when turned on

\* Def ault bands selected  
One or more bands are disabled  
Turn bands "ON" or "OFF" by  
pressing the Mute button

\* X-band detection on  
\* K-band detection on  
\* Ka-band detection on  
\* Laser detection on  
\* SWS detection off  
\* VG2 detection off

\*Default Setting

## Contact Us

### Registration

Register now to enter your new SOLO S4 for our product warranty and qualify for special offers at EscortRadar.com

### SOLO S4 Info & Accessories

800.433.3487

EscortRadar.com

### Notes for Settings & Preferences

For descriptions and details of features and functions visit EscortRadar.com to view and download the complete SOLO S4 Owner's Manual.

### Restoring the Factory Default Settings:

To reset SOLO S4 to its original factory settings, press and hold the Mute and M (Mode) buttons while turning SOLO S4 on. SOLO S4's display will provide a **Reset** message, accompanied by an audible alert, acknowledging the reset.

### Service Procedure

If your SOLO S4 ever needs service, call us at **1-800-543-1608**. We may be able to solve your problem over the phone. If the problem requires that you send your SOLO S4 to the factory for repair, we will provide you with a Service Order Number, which must be included on the outside of your shipping box.

Enclose the following information with your SOLO S4 and power cord:

- Your Service Order Number
- Your name and return address
- Your daytime telephone number
- A description of the problem you are experiencing

## Quick Reference

# ESCORT SOLO S4

Long Range Protection + Cordless Convenience

SOLO S4 Cordless Long Range Radar Laser Detector



Cordless Convenience



Long Range Radar/Laser Detection



OLED Display



Open →

## Congratulations

## SOLO S4 Features

## Installation

## Controls & Features



Your new **SOLO S4** is the most advanced cordless radar, laser and safety detector available.

The SOLO S4 includes full X, K, SuperWide Ka, and Safety Warning System radar capability, front and rear laser detection, digital signal processing (DSP) for superior range and reduced false alarms, our patented Mute and AutoMute, audible and visual band alerts, and all the performance you'd expect from ESCORT.

Go to [EscortRadar.com/manuals](http://EscortRadar.com/manuals) for full featured owner's manual.

Please drive safely.

**ESCORT**  
**SOLO S4**

The SOLO S4 introduces a new level of revolutionary cordless performance and innovative features:

- Long-range cordless performance for both radar and laser
- AutoPower feature maximizes battery life
- Brilliant high-resolution OLED display
- Advanced EZ-Programming lets you customize up to 9 features
- Exclusive AutoSensitivity mode virtually eliminates false alarms, plus Highway and City settings
- ExpertMeter tracks and displays up to 8 radar signals simultaneously
- Detects and displays up to 64 Safety Warning System messages



### Windshield Mount

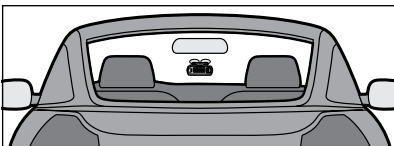
SOLO S4's EasyMount windshield bracket is designed for unobtrusive and hassle-free mounting.

### SOLO S4 Mounting Location

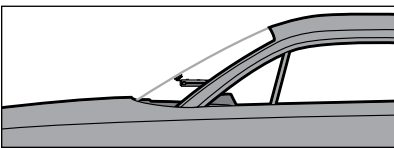
**WARNING: ESCORT cannot anticipate the many ways SOLO S4 can be mounted. It is important that you mount SOLO S4 where it will not impair your view nor present a hazard in case of an accident.**

For optimum detection performance, we recommend the following:

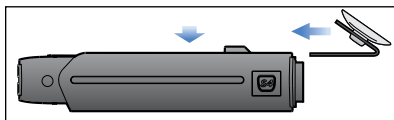
- Using the supplied Windshield Mount, stick the suction cups to the windshield, and mount your SOLO S4 level and high enough on your front windshield to provide a clear view of the road ahead.



- Mount SOLO S4 away from windshield wipers, other solid objects, and heavily tinted areas that might obstruct the radar antenna or laser lens.



1 Depress the adjustment button on the top of SOLO S4 (above the word "RELEASE") and slide the EasyMount bracket into the slot until mount is locked into the position which best fits the angle of your windshield (there are four settings available). For extremely horizontal or extremely sloped windshields, the EasyMount bracket can be bent.



To ensure that the suction cups adhere to the windshield firmly, be sure to keep both your windshield and the suction cups clean.

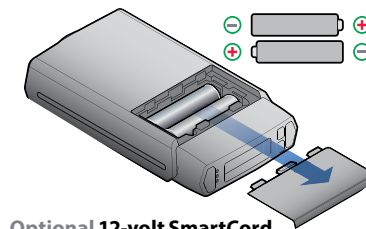
2 To adjust SOLO S4 on your windshield, use the EasyMount adjustment button located on the top of the SOLO S4, and slide SOLO S4 forward or backward to obtain a level horizontal position.

When installed and adjusted properly, the back top edge of the SOLO S4 should rest solidly against your windshield.

**User's Tip:** You can leave the EasyMount bracket in place on your windshield, and easily remove SOLO S4 by pressing the adjustment button and sliding SOLO S4 off the mount. Again, be sure to position the bracket where it won't present a hazard in the event of an accident. Additional mounts are available at [EscortRadar.com](http://EscortRadar.com).

### Battery Installation

Remove the battery door, located on the bottom of the detector, and install (2) AA batteries (supplied). Be sure to note the correct polarity for each battery (See legends inside battery compartment).



### Optional 12-volt SmartCord

To power SOLO S4 using 12-volts, simply remove the power connector plug, and insert the small end of the optional SmartCord, (telephone-type connector) into the modular jack on SOLO S4's right side. Plug the lighter plug adapter into your vehicle's lighter socket or accessory socket. The SmartCord allows you to operate the SOLO S4 on 12 volts DC negative ground only. The lighter plug is a standard size and will work in most vehicles. Of course, your lighter socket must be clean and properly connected for proper operation.

**NOTE:** Depending on your vehicle the power socket may either be continuously on, or it may be switched on and off with your ignition switch.



### EasyMount Slot

Insert SOLO S4's adjustable Windshield mount into this slot.

### EasyRelease Button

Press the release button, and slide the Windshield mount into one of its four locking positions.

### Rear Laser Port

Receives laser signals from behind the vehicle.

### Power-On Indication

Three LED's (green, yellow, red) mounted between the PWR button and the display, indicate power (blinking in battery mode, solid when optional 12-volt power cord is used). These also indicate the sensitivity mode that the unit is in, ("H" for highway, "A" for AutoSensitivity, and "C" for city).

### PWR

Press the PWR button to turn SOLO S4 on. Press and hold the PWR button to turn SOLO S4 off.

### AutoPwr Feature

The SOLO S4 will automatically shut off once the vehicle has stopped moving for approximately 25 minutes.

### Radar Antenna and Laser Lens

The rear panel of your SOLO S4 should have a clear view of the road ahead. For best performance, do not mount SOLO S4 directly behind windshield wipers or tinted areas.



### Graphic OLED Display

During an alert, the display will turn on and indicate radar band, and a precise bar-graph of signal strength. Programming options and SWS messages are also displayed.

**NOTE:** When using SOLO S4 in battery mode, the display will turn off automatically until a signal is detected, or you enter program mode. This maximizes battery life. When using the optional 12-volt SmartCord, the display will remain on and provide several pilot options for power-on indication.

### 12-volt Power Jack

For 12-volt operation, plug the optional SmartCord into this connector.

### Mute / Battery Status Button

Briefly press this button (located on top) to silence the audio for a specific alert.

### Ear Phone Jack

A standard 1/8 inch (or 3.5 mm) earphone jack is located on the right front side of the SOLO S4.

### SEN Button

Switches sensitivity between Highway, AutoSensitivity, and City settings. In general, we recommend the AutoSensitivity mode.

### Volume Control

Press the up or down button to adjust the volume.

### EZ-Programming

SOLO S4 is ready to go, just plug it in and turn it on. If you prefer, you can also easily customize up to 9 features for your specific driving preferences.

### AutoMute

SOLO S4's patented AutoMute automatically reduces the volume level of the audio alert after a brief period.

If you prefer, you can turn AutoMute off.