

Quintezz®

Locator III

User's manual

PROUD TO BE YOUR GUIDE™



GB

NL

F

E

TABLE OF CONTENTS

INTRODUCTION	2
DESCRIPTION OF THE LOCATOR III	2
INSTALLATION IN THE CAR.	4
OPERATION OF THE LOCATOR III IN THE CAR.	4
SETTINGS OF THE LOCATOR III	5
DIFFERENT ALERTS	7
ADDING LOCATIONS YOURSELF	7
DEFAULT SETTINGS	8
DOWNLOAD DATABASE LOCATIONS.	8
MAINTENANCE, DIRECTIVES AND TIPS.	11

INTRODUCTION

Congratulations!

You are now the proud owner of one of the world's most advanced GPS products.

Using the LOCATOR III offers you more safety while driving as it signals occasional inattentions. The LOCATOR III does not give you the right to exceed the speed limits. Always make sure you drive carefully!

DESCRIPTION OF THE LOCATOR III

GENERAL

The LOCATOR III is a **legal**, advanced device that gives you information about your trip and warns you for speed cameras and dangerous locations:

- 3rd generation GPS receiver with 70.000 memory locations
- Internal GPS (SiRFIII) receiver with built-in GPS antenna
- Warning for dangerous locations/roads and speed cameras through GPS
- Warning distance: 300 and 600 meter
- Software for location update (within Europe) included on CD-Rom
- European databases & updates for fixed cameras can be downloaded through Internet
- Possibility to add locations yourself
- Real speed indication
- Warning in case of overspeed. You enter a maximum speed yourself and if this is reached, you will hear an audible warning.
- Choice of different languages: English, Dutch, French and Spanish
- LED compass
- Adjustable volume
- Travel time indication
- Including:
 - Power cable
 - Velcro
 - USB cable
 - CD-Rom with PC software (locations can be downloaded for free via www.quintezz.com)

Please go to www.quintezz.com, to download the newest database into your LOCATOR III. Please also read page 8.

PARTS AND FUNCTIONS

ILLUSTRATION I

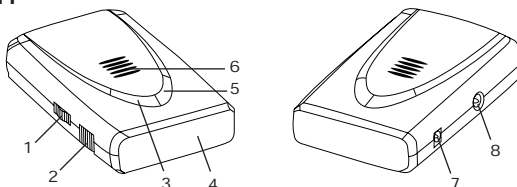
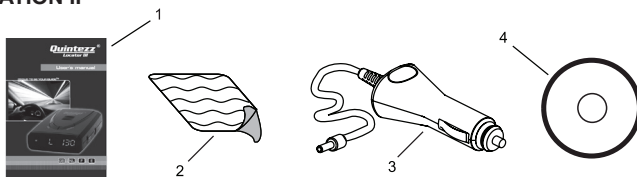


ILLUSTRATION II



SEE ILLUSTRATION I

1. Power ON/OFF + Volume wheel:
 - To turn the unit on or off.
 - To adjust the audio volume level in driving mode.
2. PC-USB Port:
 - For downloading data from your computer.
3. MENU button:
 - To enter the menu-options.
4. Display
5. ADD/DEL button:
 - Allows the user to manually add new locations where from now on warnings will be given in driving mode.
 - Allows the user to manually delete locations.
 - The user's preference for each option can be set in setting mode.
6. Speaker
7. DC 12V:
 - Power port for cigarette plug.
8. EXT-port
 - Connection for the external antenna. NOT to be used for the LOCATOR III.

ACCESSORIES IN THE BOX

SEE ILLUSTRATION II

1. Manual (with non-Radar statement) + Addendum
2. Velcro
3. Power cable
4. CD with PC software

Please go to www.quintezz.com, to download the newest database into your LOCATOR III. Please also read page 8.

INSTALLATION IN THE CAR

WHERE TO INSTALL

Important!

GPS signals are received through the built-in GPS antenna (SIRF III = suitable for all kinds of windshields, including those with metal film).

The unit can be mounted with the Velcro strip. Please make sure that the surfaces of the LOCATOR III and the dashboard are clean (greaseproof) for a proper adhesion.

Please also make sure that the information display is to be clearly visible to the driver and that the device is placed horizontally for an optimal reception of the satellites!

POWER SUPPLY

After installation of the LOCATOR III, plug the power cable in the 'DC 12V' power port (7). Remove the cigarette lighter and insert the cigarette plug in this contact accordingly.

OPERATION OF THE LOCATOR III IN THE CAR

SWITCHING THE LOCATOR III ON & AUTOMATIC SELFTEST

After being switched on, the LOCATOR III will perform an **automatic self test**. As soon as you hear 'FASTEN YOUR SEAT BELT, QUINTEZZ SELF TEST OK', the test has been properly performed and the display will show:



LOOKING FOR SATELLITES

Once the automatic selftest has been performed, the LOCATOR III will try to contact the GPS satellites. The display will show 'SRCH' (Search).



Attention!

When you are using the LOCATOR III for the first time, it can take a little longer for the device to catch the satellites. The next time it will take less than one minute.

The LOCATOR III will stay constantly connected with 4 to 12 satellites. If the connection is shortly cut (for example when passing through flyunders and tunnels) the display will go to connection mode showing 'SRCH'.

Please go to www.quintezz.com, to download the newest database into your LOCATOR III. Please also read page 8.

SETTINGS OF THE LOCATOR III

SETTING MENU

The menu button is located at the top of the LOCATOR III and indicated with "MENU". By pressing this button, you will access the setting menu that contains the following choices:

1. Maximum speed
2. Switching sound ON or OFF
3. Language
4. ODO-meter
5. Average Speed
6. Speed indication
7. Software version
8. Date of database

Each submenu will be described in the next chapters.

- To scroll through the menu, press the **MENU** button.
- To enter a selected menu, press the **ADD/DEL** button.

If no button is pressed within 5 seconds, the unit exits the menu.

1. MAXIMUM SPEED

In this submenu, the user can set a maximum speed. If the user exceeds a maximum speed, a speed alert is displayed followed by a warning sound.

- Press the MENU button until the below screen appears on the display.
- Press the ADD/DEL button to set a maximum speed.



2. SWITCHING THE SOUND ON OR OFF

With this submenu you are able to switch the sound ON or OFF.

- Press the MENU button twice, until the below screen appears on the display.
- Press the ADD/DEL button to switch the sound on or off.



Attention:

If you have selected OFF, the following sounds will not be audible:

- Start-up message: Fasten your seat belt, Quintezz self test OK.
- Warnings for cameras, in case you are NOT speeding.

By turning the volume wheel, you can adjust the audio volume.

3. LANGUAGE

With this submenu you can choose the required language.

- Press the MENU button 3 times, until the below screen appears on the display.
- Press the ADD/DEL button to select the preferred language.



4. ODO METER

This submenu shows the total traveled distance from a selected moment.

- Press the MENU button 4 times, until the below screen appears on the display.
- To reset the ODO-meter, press the ADD/DEL button.



5. AVERAGE SPEED

This submenu shows the average speed.

This display indicates the average speed of your trip after switching the unit on. When you switch the unit off, your average speed is automatically being reset.



6. SPEED INDICATION

In this submenu you can choose whether your speed needs to be indicated in Kilometers/hour or Miles/hour.

- Press the MENU button 6 times, until the below screen appears on the display.
- Press the ADD/DEL button to change the speed indication.



IMPORTANT:

If you set your LOCATOR III to **UN:00**, your speed will be indicated in Kilometers/hour.

If you set your LOCATOR III to **UN:01**, your speed will be indicated in Miles/hour.

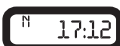
7. SOFTWARE VERSION

This submenu shows the current version of the software. Press the MENU button 7 times until the software version appears on the display.



8. DATE OF DATABASE

This submenu shows you when the database was last updated (DD:MM). Press the MENU button 8 times to check the date of the last update.



DIFFERENT ALERTS

The LOCATOR III will show the following screen when you approach a speed camera at a distance of 450 meters on the current road.



While you are driving, the LOCATOR III will give you a warning sound when you approach a camera, a dangerous location, a track control section or a user data location. This audible warning depends on your settings for 'Switching the sound ON or OFF'. In case this setting was turned OFF, there will only be a warning in case of overspeed.

A first warning will be given at a distance of about 500 meters. A second warning (KEEP SAFETY DRIVING) will be heard at a distance of 300 meters.

CAMERA & TWO-WAY CAMERA

The following screen indicates a camera or a two-way camera warning at a distance of 450 meters on the current road.



At a distance of about 500 meters of the camera you will hear 'CAMERA' or 'TWO WAY CAMERA' and at a distance of 300 meters the LOCATOR III will say 'KEEP SAFETY DRIVING'.

DANGEROUS LOCATION, TRACK CONTROL & TRACK CONTROL END

This alert indicates a dangerous location, a track control or a track control end at a distance of 450 meters on the current road.



At a distance of about 500 meters of the location you will hear 'DANGEROUS LOCATION', 'TRACK CONTROL' or 'TRACK CONTROL END' and at a distance of 300 meters the LOCATOR III will say 'BE CAREFUL'.

ADDING LOCATIONS YOURSELF

The user can manually add and delete locations from the memory of the LOCATOR III while driving. These locations are called 'user data'. The memory for users data has a capacity of 800 locations.

How to add a location?

If you want to manually add a location, press the ADD/DEL button at that location, while driving. The LOCATOR III will confirm the saving of this location as indicated in the following display:



Please go to www.quintezz.com, to download the newest database into your LOCATOR III. Please also read page 8.

How to delete a location?

If you want to delete a manually added location, press the ADD/DEL button at the respective location. This needs to be done during the visual and audible alarm for this particular location. The location will be deleted and the LOCATOR III will confirm the deleting of this location as indicated in the following display:



When you are driving, and are at a distance of 500 meters of a user location that is saved in the memory of your LOCATOR III, a warning will be shown and you will hear 'DING DONG' and 'WATCH OUT'.

When you are at a distance of 300 meters, the LOCATOR III will repeat 'DING DONG DING DONG'. The alert shown hereafter indicates a user point warning at a distance of 450 meters.



SPEED ALERT

There are two kinds of speed alert warnings showing the above display: 'warning limit speed alert' and 'system limit speed alert'. In case of a 'warning limit speed alert', you will hear a 'DING DING DING' tone. In case of a 'system limit speed alert', you will hear 'TING TING TING' with a sharp tone.



DEFAULT SETTINGS

- A. Maximum speed: 130 km/h
- B. Sound: ON
- C. Language: English
- D. Speed indication: Km/h

DOWNLOAD DATABASE LOCATIONS

INTRODUCTION

The included CD-Rom contains software that makes it possible to download and update regularly the locations of speed cameras (and dangerous locations) via the Quintezz website (www.quintezz.com). Firstly you need to install this software on your PC. Connect the LOCATOR III with the included USB-cable to the PC and download the database from the Quintezz website into your unit accordingly.

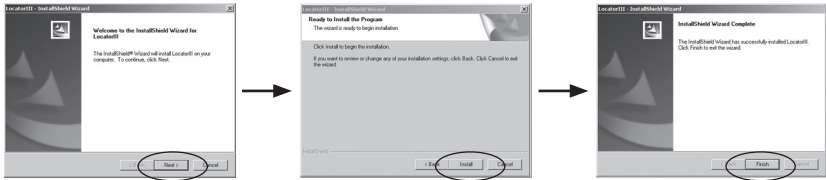
The different steps hereafter describe in detail how you can download the locations of speed cameras and dangerous locations into your LOCATOR III.

STEP 1: INSTALLING THE QUINTEZZ SOFTWARE

1. Insert the CD into the CD-ROM network drive.
2. Choose your language and click on 'Next'.
3. Click on 'Next' → 'Install' → 'Finish'.

Please go to www.quintezz.com, to download the newest database into your LOCATOR III. Please also read page 8.

Locator III - InstallShield Wizard



4. As soon as you have installed the Quintezz software, an icon 'Quintezz Locator III Easy update' will appear on the desktop of your computer. →



STEP 2: DOWNLOAD DATABASE CAMERA LOCATIONS

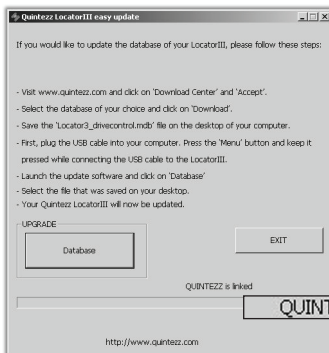
1. Click on the icon 'Quintezz Locator III Easy update', created during the installation of the Quintezz software (see step 1).
2. Go to www.quintezz.com with **Internet Explorer**^(*) and choose English as language.
3. Click on 'Download Center'.
4. Click on 'Accept' to accept the Quintezz juridical statement.
5. Select the database of your choice in the column 'Locator III/Drive Control'.
6. Click on 'Download' to confirm your choice.
7. Save the file 'Locator-Alert-RadarAlert.mdb' on your desktop.
8. As soon as the message 'Download complete' appears on your screen, click on 'Close'.

STEP 3 : UPDATE YOUR QUINTEZZ LOCATOR III

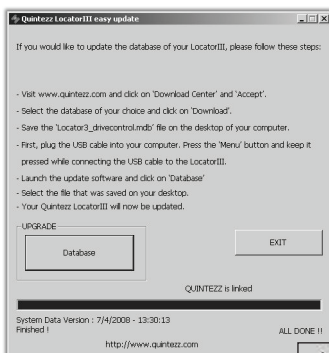
1. Close the site www.quintezz.com.
2. First of all, connect the USB cable to your computer.
3. Take your LOCATOR III and press the button 'MENU'. Now keep this button pressed while connecting the LOCATOR III to the other end of the USB cable. When you have connected the LOCATOR III correctly, the display will show '[dL]' and 'Quintezz is linked' will be shown on the screen of your computer. If the button 'MENU' was not pressed while downloading the USB cable to the LOCATOR III, the software will not be able to start downloading the database. In this case you will have to try again, starting from step 3.

^(*) It is recommended not to use Firefox, Safari, etc.

Please go to www.quintezz.com, to download the newest database into your LOCATOR III. Please also read page 8.



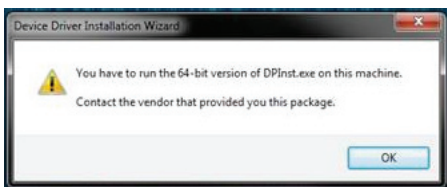
4. Click on 'Database' and select the file 'Locator-Alert-RadarAlert.mdb' that was previously saved on your desktop. Click 'OK' when the version and date of the database appear on your screen. The software will now start downloading the database into your LOCATOR III.
Do not unplug the LOCATOR III until 'ALL DONE' is shown on your screen!



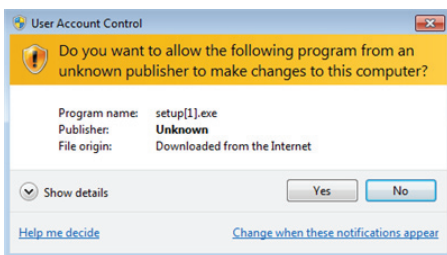
5. Click on 'Exit'.
6. Your LOCATOR III is now up-to-date and ready to use!

Possible error messages

The following messages may occur during the total download process:



In this case, please click 'OK' to continue.



In this case, please click 'Yes' to continue.

MAINTENANCE, DIRECTIVES AND TIPS

REPLACING THE FUSE

There is a fuse in the cigarette plug of the LOCATOR III. To replace the fuse, you need to loosen the screw cap of the cigarette plug. Always make sure you replace the fuse with one of equal value.

ENVIRONMENT

The LOCATOR III is a very advanced GPS-system that is composed with high-quality components.

Extreme low and high temperatures, heavy shocks, etc. should be avoided. Do not expose the LOCATOR III to direct sunlight.

THEFT

Quintezz appliances are also attractive to people with not so good intentions. In order to prevent theft, we advise you not to leave your LOCATOR III unattended in your car.

Please go to www.quintezz.com, to download the newest database into your LOCATOR III. Please also read page 8.

GUARANTEE

Quintezz is a registered trademark of TE-Group NV.

The Quinteazz brand stands for superior product quality and outstanding customer service. That is why Quinteazz warrants this product against all defects in material and workmanship for a period of **three (3) years** from the date of original purchase of the product.

The conditions of this guarantee and the extent of responsibility of Quinteazz under this guarantee are as follows:

- This guarantee is limited to the original purchaser of the product and is not transferable to any subsequent purchaser/end user.
- During the guarantee period, the sole responsibility of Quinteazz will be limited to repair or replace, at its option, any defective parts of the product if this is needed because of malfunction or failure under normal use and conditions. No charge shall be made to the customer for parts and/or repair labor.
- The product must be shipped to an authorized service center in its original and complete packaging, with transportation charges prepaid. Quinteazz will not assume responsibility for any losses or damages during transportation.
- To obtain repair or replacement within the terms of this guarantee, the customer must provide (a) a proof of purchase (e.g. dated bill of sale); (b) a written specification of the defect(s); (c) a return address and phone number.
- This guarantee does not cover and is void with respect to the following:
 - (a) Products which have been subjected to improper installation, unauthorized repair, improper maintenance, unauthorized modifications or other acts which are not the fault of Quinteazz;
 - (b) Products which have been subjected to misuse, abuse, neglect, improper handling and storage, an accident or physical damage;
 - (c) Products which have been subjected to fire, water, excessive humidity, sand, dirt, extreme changes in temperature or other conditions which are beyond the control of Quinteazz;
 - (d) Products which have been used with non-Quinteazz approved accessories;
 - (e) Products which have the serial number altered, defaced or removed;
 - (f) Products which have been opened, altered, repaired or modified by any unauthorized service center.
- Excluded from any guarantee are consumable items which may need replacing due to normal wear and tear, such as batteries, ear cushions, decorative parts and other accessories, problems with your PC or Internet, damage to your car and fines.
- This guarantee gives you specific legal rights, and you may also have other rights which vary from country to country.

Please go to www.quinteazz.com, to download the newest database into your LOCATOR III. Please also read page 8.