

MESTA FUSION

SPEED & RED LIGHT ENFORCEMENT AND MUCH MORE

A POWERFUL COMBINATION FOR SAFER ROADS

KEY MISSIONS, KEY TECHNOLOGIES, KEY TALENTS



The Morpho logo and trademark are the property of Safran group. Copyright 2012. All rights reserved. - Photos Thinkstock

New generation multi-target Tracking Doppler radar technology
36 Mpixels, Day and Night High quality color pictures
High detection rate
Multi-lane management (up to 8 lanes)
A wide set of violation monitoring

MESTA FUSION



MAIN TECHNICAL CHARACTERISTICS

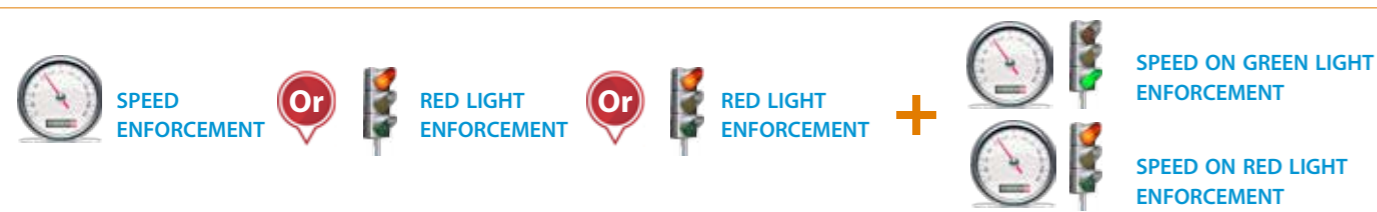
- Multi-target Doppler radar: "3D" large beam
- Tracking capability: up to 32 vehicles
- High picture resolution: up to 36 Mpixels
- Multilane monitoring: up to 8 lanes
- Speed range: from 0 km/h to 300 km/h
- Accurate speed measurement: $\pm 1\%$ (OIML R91 and D11 compliant, verified by the METAS)
- High detection rate: accurate vehicle cluster separation
- Non-intrusive red light crossing detection
- Vehicle classification
- Adapted to extreme weather conditions

AN EFFECTIVE ANSWER TO ADDRESS TWO MAJOR ROAD SAFETY ISSUES

Powerful combination of the latest technologies, MESTA FUSION ensures simultaneous automatic speed and red light enforcement. It integrates a non-intrusive multitarget tracking radar technology and a high resolution camera - the highest resolution on the market - performing perfectly over multiple traffic lanes. As soon as an infringement is detected, a violation message is created, encrypted and sent through secured network (ADSL, 3G, 3G+).

Through highly configurable embedded Software and modular architecture, MESTA FUSION allows easy installation and maintenance, on site or remotely from the processing center.

Suitable for urban and highway zones and different deployment site configurations such as intersections. With its air-conditioned housing, it works under extreme weather conditions.



OUTSTANDING CAPABILITIES FOR SAFER ROADS

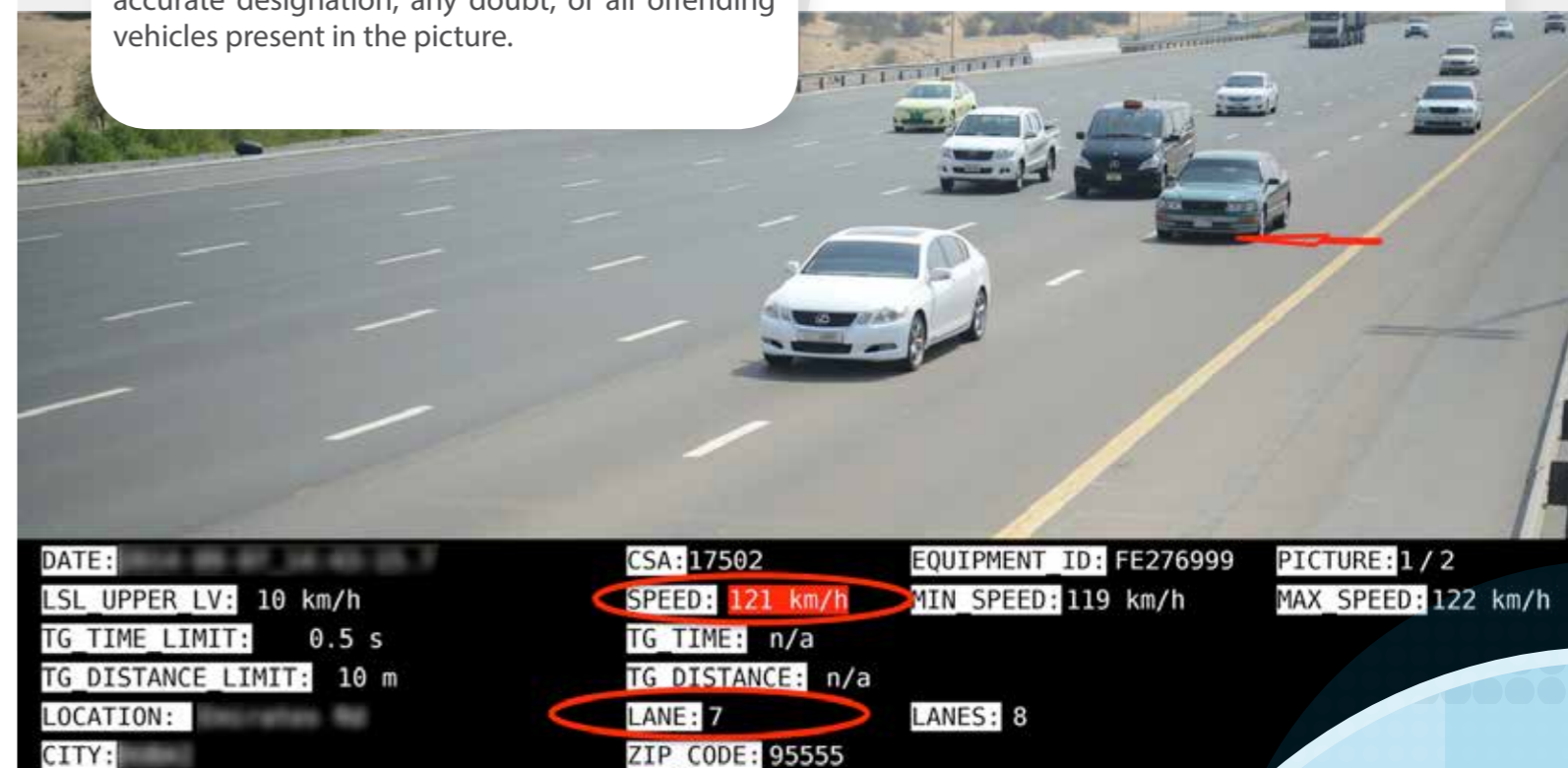
In addition to speed and red-light-crossing enforcement capabilities, MESTA FUSION paves the way to many other enforcement functions such as: forbidden lanes, forbidden overtake, tailgating, low speed, Turn Left or Right enforcement and much more.

- **Non-intrusive violation detection:** the multi-target Doppler radar offers an accurate and reliable measurement of both speed and position of several vehicles at the same time. It captures all vehicles' locations when crossing the red light and monitors their speed.
- **Multi-lane management:** the MESTA FUSION tracks up to 32 vehicles, in approaching and/or receding mode, and on several lanes simultaneously. It also manages different speed limits per traffic lane and per vehicle class.
- **High image quality:** equipped with the highest resolution camera on the market - up to 36 Mpixels - and a new generation powerful flash (white or red lightning), the MESTA FUSION offers color images with optimal license plate readability - for Automatic Number Plate Recognition - and vehicle context visibility.
- **Vehicle classification:** this feature allows the MESTA FUSION to enforce different speed limits for light or heavy vehicles.

NO ESCAPE FOR OFFENDERS !

Through advanced trajectory analysis, the Doppler radar tracks all the vehicles moving in the controlled area up to 8 lanes. This native capability ensures an accurate designation, any doubt, of all offending vehicles present in the picture.

For more information, you can reach us at:
+33 1 58 11 70 76 - roadsafety@morpho.com



MESTA FUSION PAVES THE WAY TO A COMPREHENSIVE ROAD LAW ENFORCEMENT SOLUTION:

- Anticipated speed tracking and measurement
- Different speed limits enforcement per lane and per vehicle category
- Forbidden and authorized lanes monitoring
- Illegal lane crossing detection
- Low speed enforcement
- Illegal overtaking control, even for motorcycle
- Tailgating monitoring
- Secondary speed measurement for post analysis
- Live video: additional evidence of the offense
- Smart turn-left monitoring
- Stop bar crossing detection
- Road traffic statistics collection

